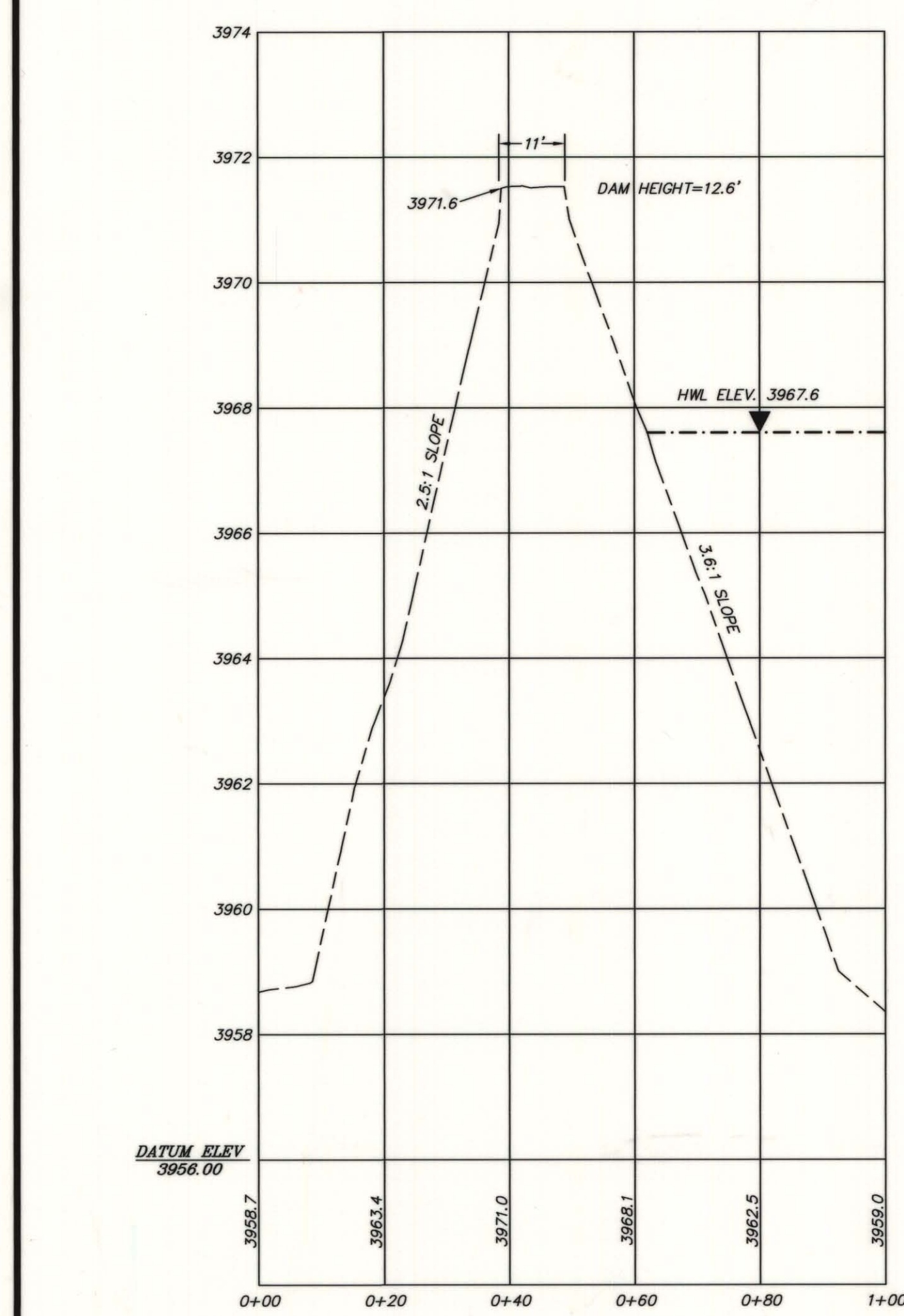
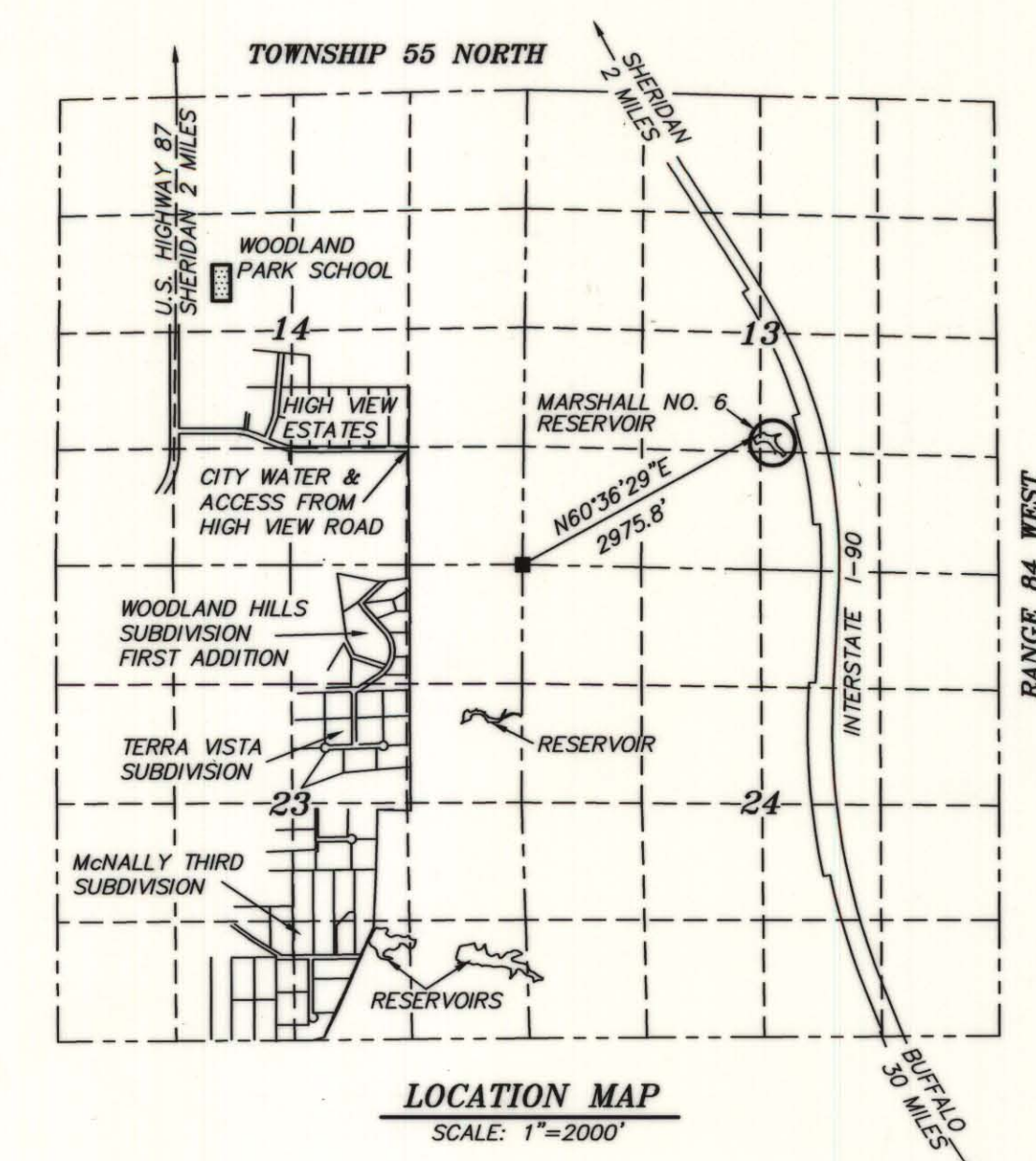


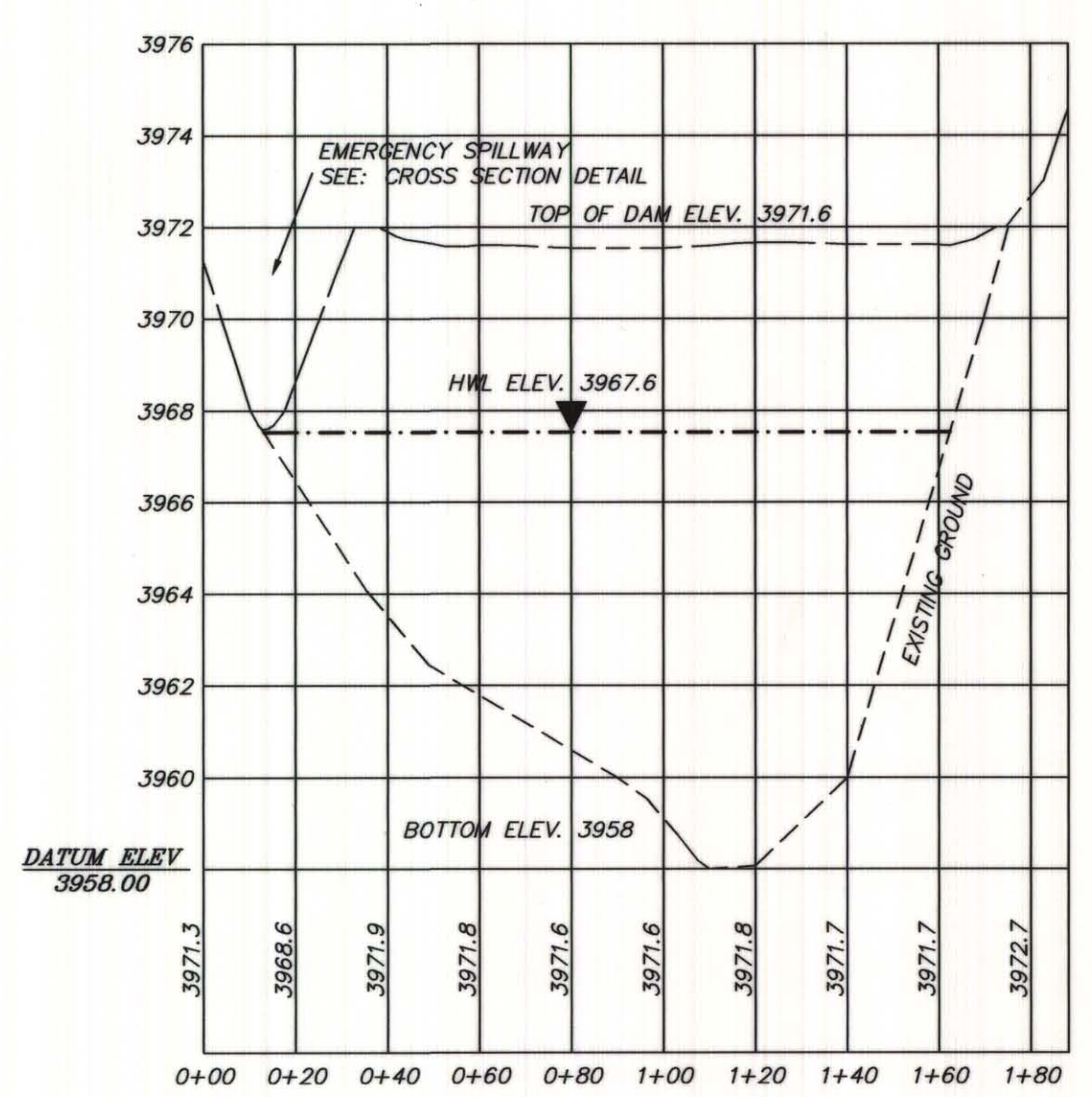
RESERVOIR CAPACITY TABLE

CONTOUR LINE	AREA	INCR.(AF)	CUM.(AF)
3958	0.01	0.03	0.00
3959	0.04	0.09	0.03
3960	0.13	0.18	0.12
3961	0.23	0.30	0.30
3962	0.36	0.42	0.60
3963	0.48	0.53	1.02
3964	0.59	0.64	1.56
3965	0.68	0.74	2.20
3966	0.79	0.85	2.94
3967	0.90	0.96	3.79
3967.6 (H.W.)	0.95	1.01	4.35
TOTAL			4.35

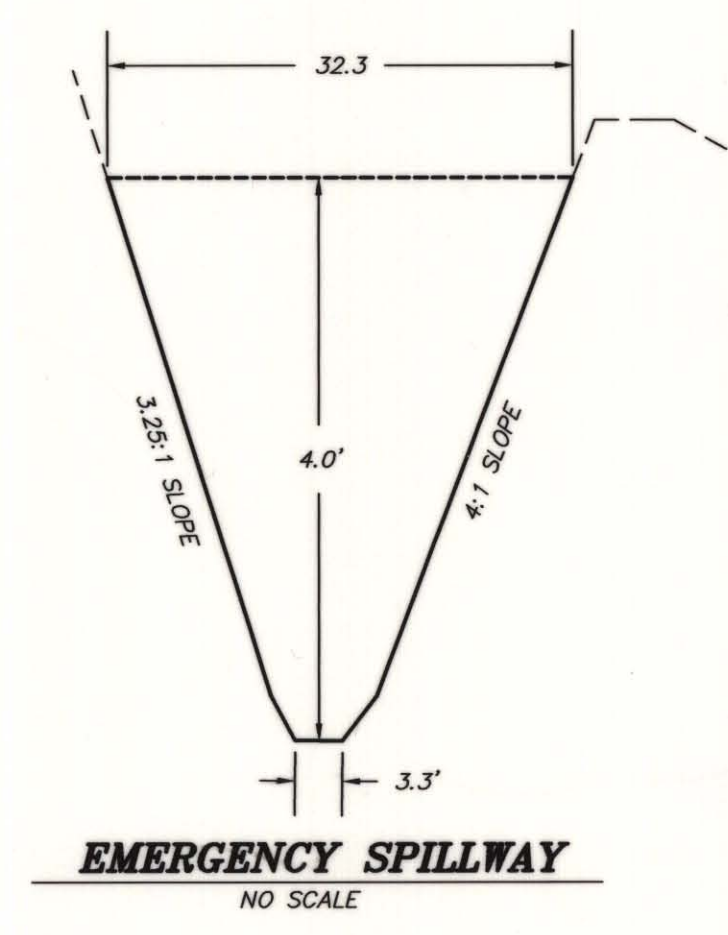
INACTIVE CAPACITY
4.35 ACRE FEET
STOCK USAGE



DAM CROSS SECTION A-A
SCALE: HORIZONTAL 1"=20', VERTICAL 1"=2'



DAM PROFILE B-B
SCALE: HORIZONTAL 1"=40', VERTICAL 1"=4'



MARSHALL NO. 6 RESERVOIR
FOR STOCK USAGE: WATER IS A FLOW THROUGH FROM DRY CREEK, USE WILL BE FOR STOCK ONLY.
H.W. AREA=0.95 ACRES MAXIMUM DEPTH=9.6' CAPACITY=4.35 Ac. ft.
(AREAS AND VOLUME CALCULATED WITH DCA AUTO-CAD)

EMERGENCY SPILLWAY HYDRAULICS:
S= 0.0154 FT/FT
R= 2.13
V= 10.18 FPS
A= 71.20 SF
N= 0.030
Q= 725.01 CFS

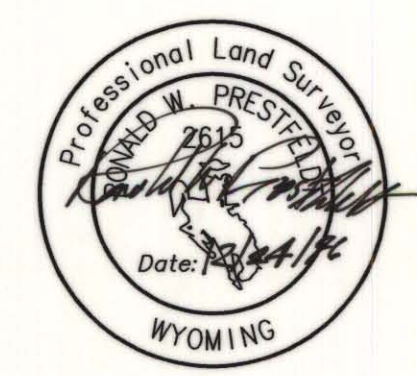
THE HYDRAULIC COMPUTATIONS WERE MADE WITH MANNING'S FORMULA FLOMASTER 1 (HAESTAD METHODS)

SURVEYOR'S CERTIFICATE

STATE OF WYOMING : ss
COUNTY OF SHERIDAN

I, RONALD W. PRESTFELDT A DULY REGISTERED LAND SURVEYOR IN THE STATE OF WYOMING, DO HEREBY CERTIFY THAT THIS PLAT TRULY AND CORRECTLY REPRESENTS THE RESULTS OF A SURVEY MADE BY ME OR UNDER MY DIRECT SUPERVISION DURING OCTOBER, 1994.

RONALD W. PRESTFELDT
RONALD W. PRESTFELDT WY L.S. 2615



MAP
TO ACCOMPANY APPLICATION FOR THE MARSHALL NO. 6 RESERVOIR

APPLICANT:
BILL DOENZ
P.O. BOX 6474
SHERIDAN, WYOMING 82801



APPROVED: May 18, 1997
John R. Bassett
GORDON W. BASSETT, STATE ENGINEER