



# Spear – O – Wigwam

Bighorn National Forest, WY







Alpine splendor combines with a true western experience when guests arrive at the Historic Spear-O Wigwam guest ranch. No wonder Ernest Hemmingway was inspired to visit and write the first outline of *A Farewell to Arms*. Built in 1924, the original lodge was designed like after a Native American Wigwam using logs harvested from the immediate area. Early guests gather around the central fire each night that was open to the sky. The current owner took meticulous care and completed many improvements to both the structures and utilities.

Park Reservoir is a stone's throw away offering a variety of fishing and water sports. For an experience of a lifetime, guests depart the main lodge on horseback traveling through the pristine Cloud Peak Wilderness to the Beaver Lakes camp. Local legend says the fishing is amazing but don't tell anyone.

10 guest cabins plus a recreation cabin ring the Lodge to offer flexible lodging options for up to 36 people.



Spear-O-Wigwam, Sheridan County, WY

Offered by Marie Lowe and Bruce E. Garber, CENTURY 21 BHJ Realty, Inc.

307-672-5838

# Features and Amenities



Tack Room & Corrals



Employee Bunkhouse



Year Round Cabin

## Additional information:

- Spear-O-Wigwam is a turnkey facility. All buildings are fully furnished.
- The facility sets on a National Forest Service lease.
  - New owners will need to apply for a new lease.
  - The lease is for 20 years and is renewable.
  - Includes Beaver Lakes camp which in its own right, is a well-appointed tent cabin outpost.

## Building Details:

Main Ranch: Main Lodge with dining room and kitchen, Recreational Hall, nine cabins, laundry room, maintenance building, generator shed, two bunkhouses, tack room/feed storage and bunkhouse, two small camper trailers, corrals, round working pen, storage barn and access road, septic system, spring fed water system with pump house, footbridge to water shed, electrical and LP utilities, two above ground gas tanks, 1000 gallon diesel tank, hot tub, satellite internet dish, and fences.

## Horses:

The Forest Service permit includes a tourist horse allotment for 60 horse months of grazing from June 15- September 30 at the main ranch and 15 horse months in the Beaver Lakes pasture from June 15- November 15.



Spear-O-Wigwam, Sheridan County, WY

Offered by Marie Lowe and Bruce E. Garber, CENTURY 21 BHJ Realty, Inc

307-672-5838



# A Brief History...

## Spearo Lodge Construction



In 1924, Willis Spear built the lodge at Spear-O-Wigwam to attract visitors from “the East” who wanted to experience American West. The draw to experience the true West continues today with visitors from around the globe. While the ranch had several classic log cabins, its first building, the “wigwam,” an eight-sided lodge 40 feet in diameter that resembled a tepee in form and function. The architecture of Spear-O-Wigwam was designed to epitomize the western blend of rugged cowboy style and Indian culture. The Spears built the original wigwam as a “council lodge,” complete with a big fire built in the central fire pit each night. Guests dined around the open hearth, eating Spear beef raised on the Crow Indian Reservation just north of Sheridan, Wyoming while watching smoke rise through an opening at the peak of the building.



**A PLACE OF INSPIRATION – HEMINGWAY CABIN** - There’s nothing extraordinary about the building or the simple furnishings inside: a bed, a desk, and a stone fireplace. But for a few weeks in 1928, this humble cabin served as the writing workshop for Ernest Hemingway as he wrote *A Farewell to Arms*. Thousands of people have followed in Hemingway’s tracks to become guests here adding to its long and vibrant history.

In 2016, Spear-O-Wigwam was officially listed on the National Register of Historic Places with the National Park Service.

*Who will write the next chapter in the history of Spear-O-Wigwam?*



Spear-O-Wigwam, Sheridan County, WY

Offered by Marie Lowe and Bruce E. Garber, CENTURY 21 BHJ Realty, Inc

307-672-5838

# Features and Amenities

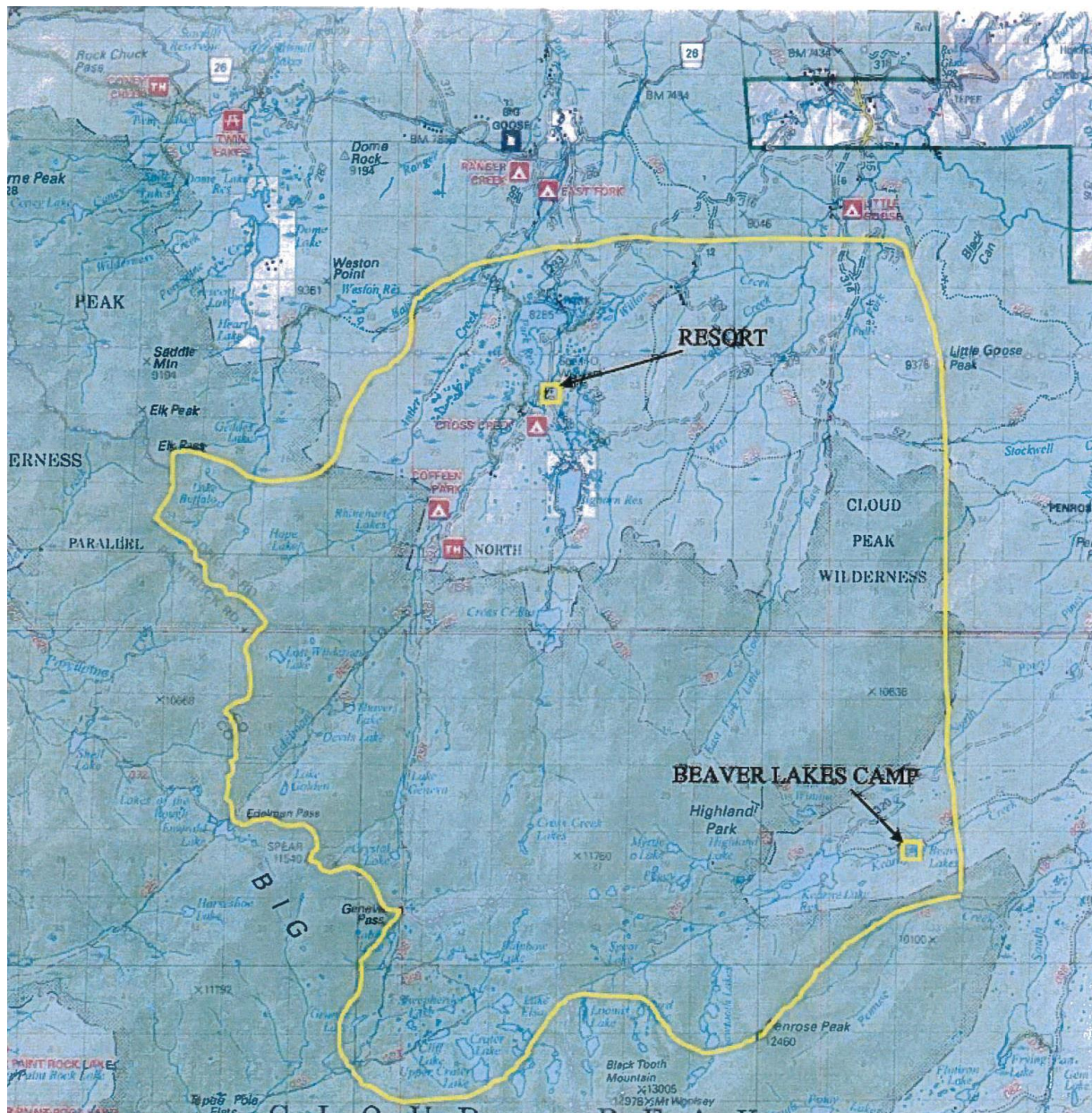


Both Beaver Lakes Camp and Spear-O are fully furnished from bedding to saddles. The personal property list is extensive and will be provided prior to making an offer.

The property is under a National Forest Service Lease which covers 15 acres of exclusive use around the Spear-O main lodge and another 3 acres at the Beaver Lake Outpost. In addition, there is a large use area as defined on the following page.







Spear-O-Wigwam, Sheridan County, WY

Offered by Marie Lowe and Bruce E. Garber, CENTURY 21 BHJ Realty, Inc

307-672-5838



# Terms of Sale:



List Price: \$800,000

## Lease Information:

A sale requires approval from Forest Service for a new lease – it must be open to the public for at least part to the year.

Application is on file at listing office.

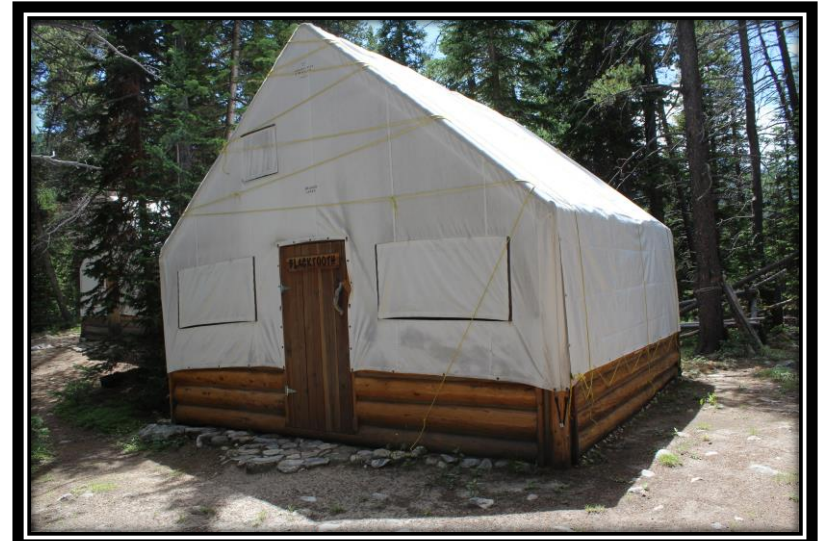




# BEAVER LAKES OUTPOST



Seven tent frames and floors (cookhouse, 2 bunkhouses, 3 storage and 1 tack tent), 4x4 pit toilet, and 40 x 40 corral. Accessed by horse back through the Cloud Peak Wilderness Area.



Spear-O-Wigwam, Sheridan County, WY

Offered by Marie Lowe and Bruce E. Garber, CENTURY 21 BHJ Realty, Inc

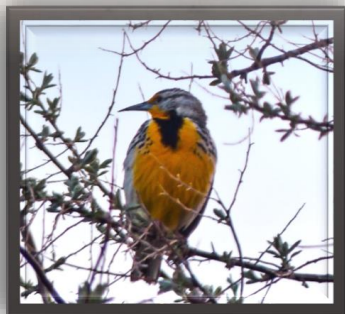
307-672-5838



# Mountain Neighbors



An abundance of nature brings a variety of unexpected guests daily.



Mule Deer  
Elk  
Moose  
Bear  
Sharp-Tail Grouse  
Pheasant  
Trout  
Red Headed Woodpeckers  
Black Capped Chickadee  
Mountain Bluebird  
Bald and Golden Eagles  
Red Tail Hawk  
Water Fowl  
Western Meadowlark







# CENTURY 21<sup>®</sup>

BHJ Realty, Inc.

Contact Marie or Bruce to schedule  
your private showing today!

Marie Lowe, Associate Broker  
406-600-2131

[wren.wyoming@century21.com](mailto:wren.wyoming@century21.com)

Bruce E. Garber, Broker-Owner  
307-752-2013

[Bruce.garber@c21bhj.com](mailto:Bruce.garber@c21bhj.com)

101 S. Main St.

Sheridan, WY. 82801

[www.century21bhj.com](http://www.century21bhj.com)

