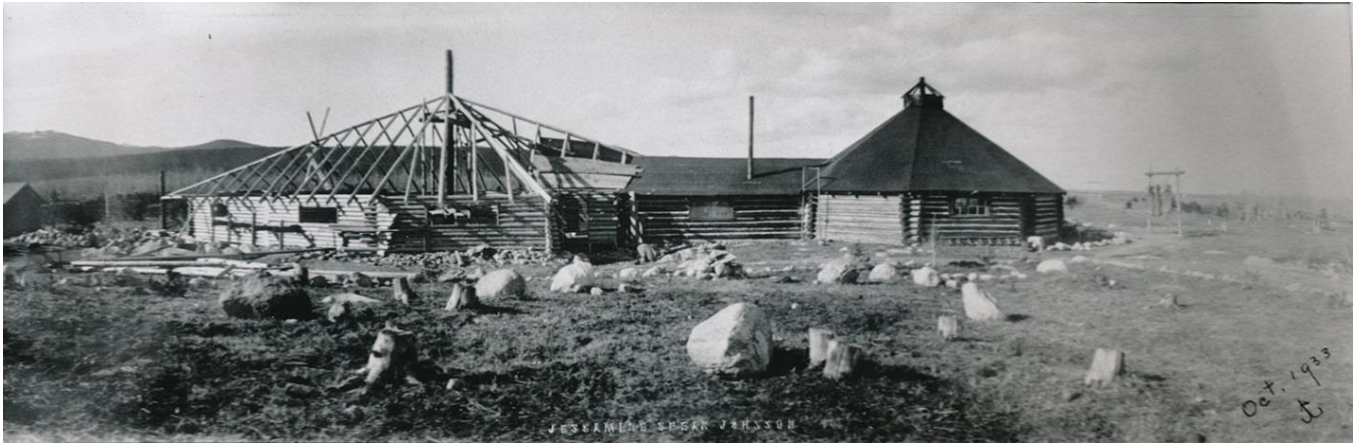
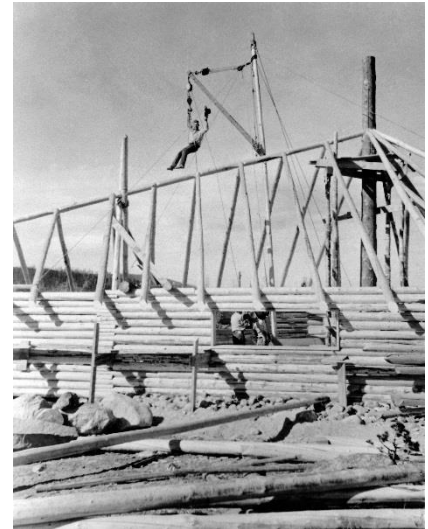


## A Brief History of Spear-O-Wigwam in the Bighorn Mountains



In 1924, Willis Spear built the lodge at Spear-O-Wigwam. The architecture was designed to epitomize his western blend of rugged cowboy style and Indian culture. While the ranch had several classic log cabins, its first building was the "wigwam," an eight-sided lodge 40 feet in diameter that resembled a tepee in form and function. The Spears built the original wigwam as a "council lodge," complete with a big fire built in the central fire pit each night. Guests dined around the open hearth, eating Spear beef raised on the Crow reservation while watching smoke rise through an opening at the peak of the building. The original guests paid \$50/week for mountain trips based out of the lodge.

From June to September each year, guests made the trip from Sheridan up the Red Grade Road. They came from across the United States and around the globe, seeking solitude in what a ranch brochure called "a wild confusion of alpine grandeur". Guests hoped all this strenuous activity would rejuvenate the spirit, strengthen the body and enliven the mind. The vigorous lifestyle fit the prescription that Teddy Roosevelt and many others had offered as a remedy for the "soft" life in the cities of the East. At Spear-O-Wigwam, the Willis Spear family created a legacy of exploration and passion for the Bighorn Mountain Region. The Riehms family sustained that vision, for 37 years. The current owner, Northern WY Community College, operated the ranch as mountain classroom.



Offered by **CENTURY 21, BHJ Realty**

Bruce Garber

307-672-5838 bruce.garber@C21bhj.com

**101 S. Main St., Sheridan, WY**

406-600-2131

**[www.century21bhj.com](http://www.century21bhj.com)**

Marie Lowe

wren.wyoming@gmail.com



### ***A place of inspiration - Hemingway cabin***

High in Wyoming's Bighorn Mountains at the end of a 30 mile road stands a small log cabin by a rushing stream. There's nothing extraordinary about the building or the simple furnishings inside: a bed, a desk, and a stone fireplace. But for a few weeks in 1928, this humble cabin at the Spear-O-Wigwam ranch served as the writing workshop for Ernest Hemingway as he wrote *A Farewell to Arms*. Thousands

of people have followed in Hemingway's tracks to become guests at Spear-O-Wigwam ranch, adding to its long and vibrant history.

*In 2016, Spear-O-Wigwam was officially listed on the National Register of Historic Places with the National Park Service*

Who will write the next chapter in the history of Spear-O-Wigwam?



Offered by **CENTURY 21, BHJ Realty**

Bruce Garber

307-672-5838    bruce.garber@C21bhj.com

**101 S. Main St., Sheridan, WY**

406-600-2131

**[www.century21bhj.com](http://www.century21bhj.com)**

Marie Lowe

wren.wyoming@gmail.com