



## Beaver Creek Ranch



### Legend

- Rail Road CL
- INTERSTATE
- US HIGHWAY
- WYOMING STATE HIGHWAY
- SHERIDAN COUNTY ROAD
- FOREST SERVICE ROAD
- PUBLIC ROAD
- PRIVATE ROAD

### Major Rivers Streams

### Stream Level

- 4-5
- 6+

### Parcels

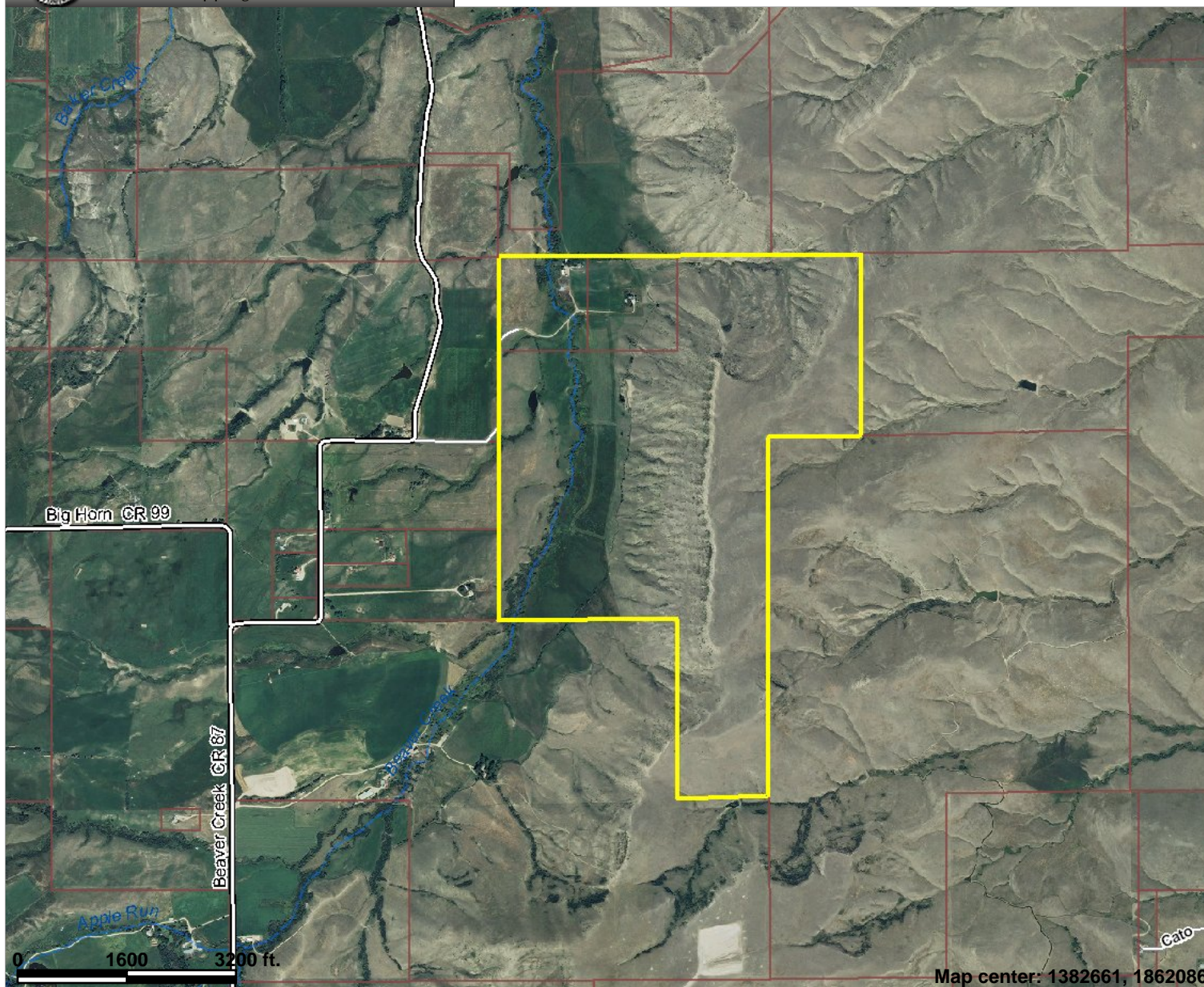
### Sheridan County 2009

### RGB

- Red: Band\_1
- Green: Band\_2
- Blue: Band\_3



Scale: 1:27,028



This map is a user generated static output from an Internet mapping site and is for general reference only. Data layers that appear on this map may or may not be accurate, current, or otherwise reliable. THIS MAP IS NOT TO BE USED FOR NAVIGATION.

Notes: 640 Acres