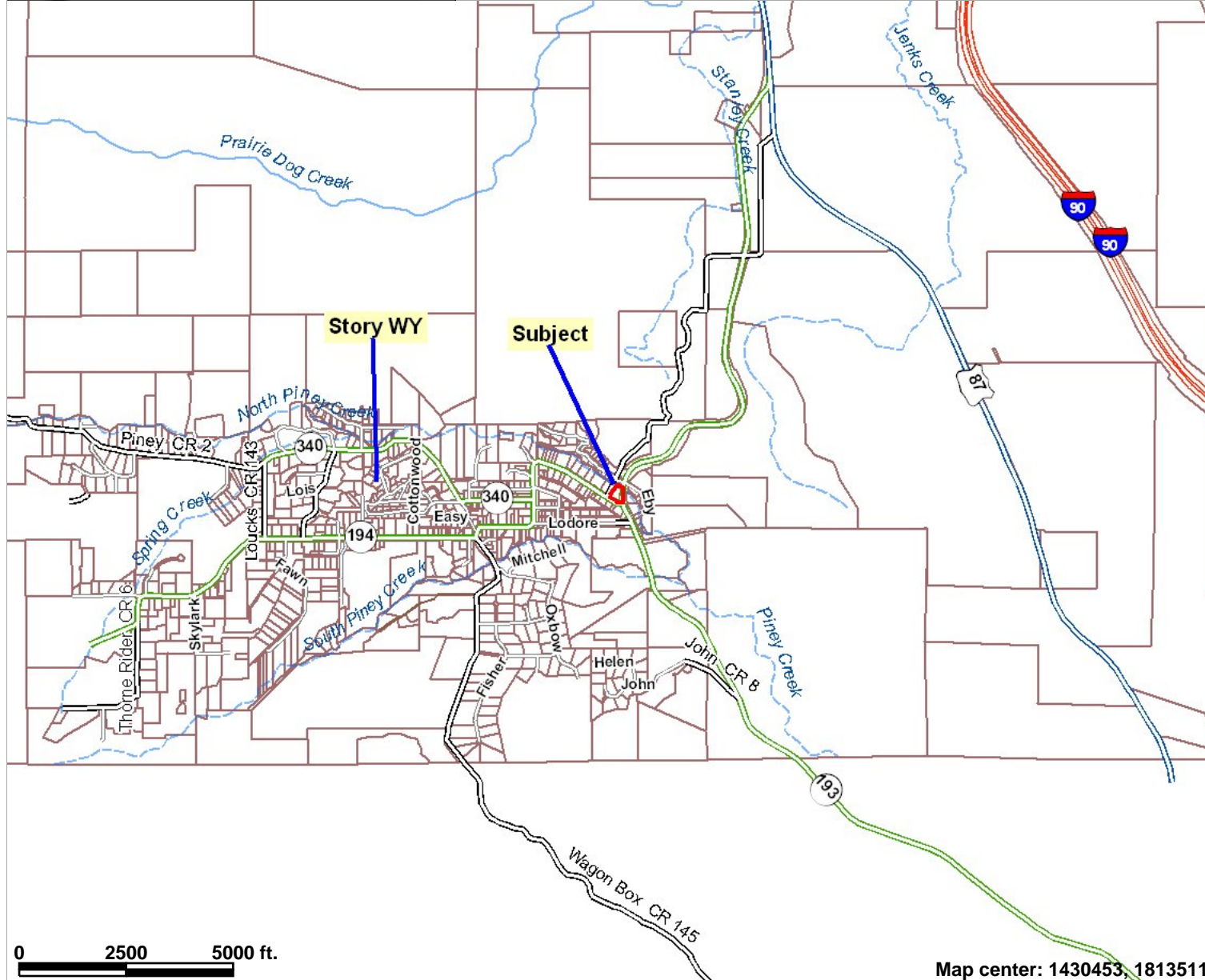
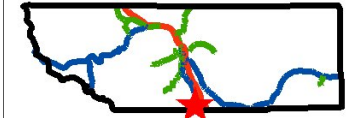




Locator Map



Legend

- Rail Road CL
 - INTERSTATE
 - US HIGHWAY
 - WYOMING STATE HIGHWAY
 - SHERIDAN COUNTY ROAD
 - FOREST SERVICE ROAD
 - PUBLIC ROAD
 - PRIVATE ROAD
- Major Rivers Streams
- Stream Level**
- 4-5
 - 6+
 - Parcels

0 2500 5000 ft.

Map center: 1430453, 1813511

Scale: 1:43,085

This map is a user generated static output from an Internet mapping site and is for general reference only. Data layers that appear on this map may or may not be accurate, current, or otherwise reliable. THIS MAP IS NOT TO BE USED FOR NAVIGATION.