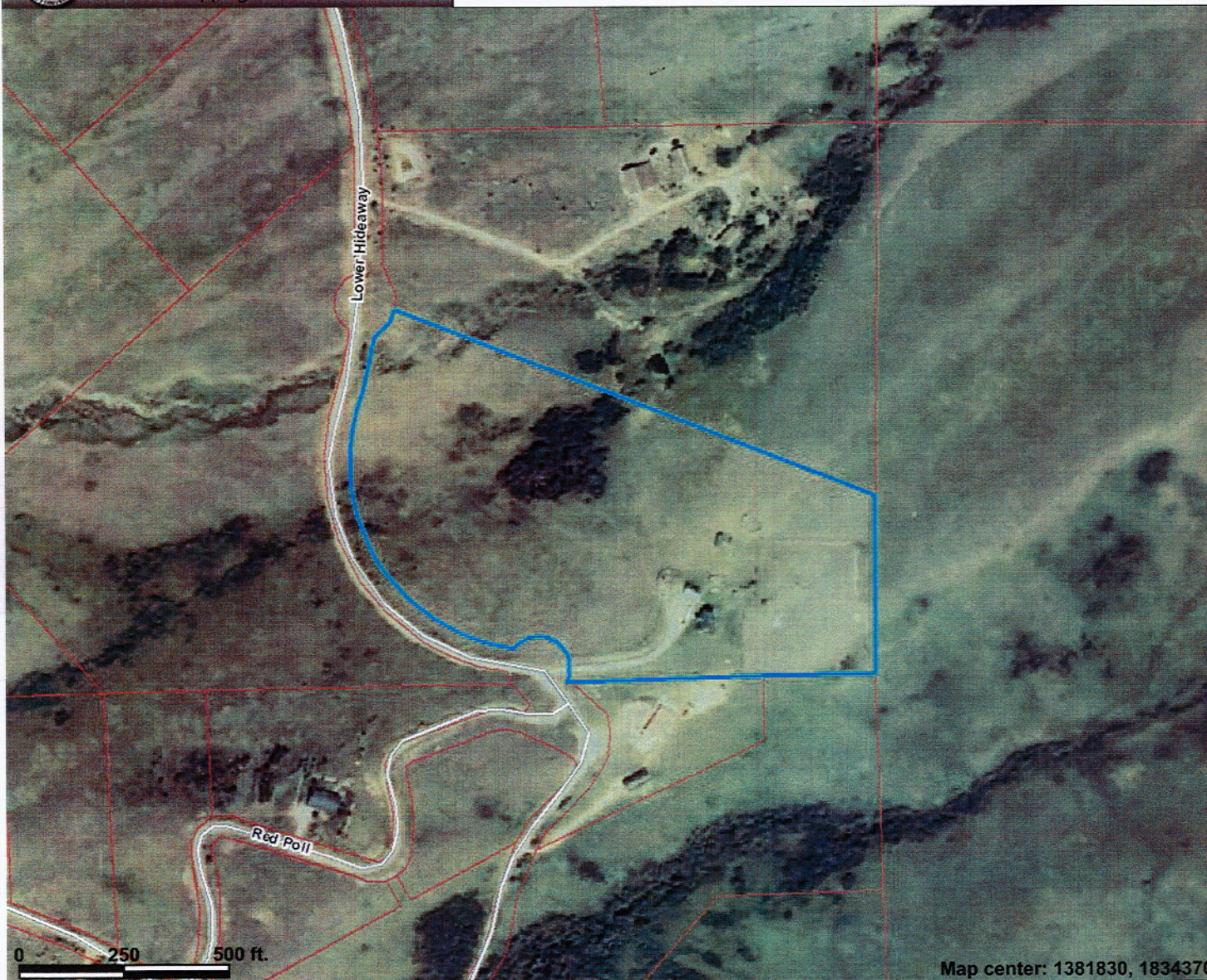




47 Lower Hideaway



Legend

- Rail Road CL
- INTERSTATE
- US HIGHWAY
- WYOMING STATE HIGHWAY
- SHERIDAN COUNTY ROAD
- FOREST SERVICE ROAD
- PUBLIC ROAD
- PRIVATE ROAD

Major Rivers Streams

Stream Level

- 4-5
- 6+

Parcels

Sheridan County 2009

RGB

- Red: Band_1
- Green: Band_2
- Blue: Band_3



Scale: 1:4,416

This map is a user generated static output from an Internet mapping site and is for general reference only. Data layers that appear on this map may or may not be accurate, current, or otherwise reliable. THIS MAP IS NOT TO BE USED FOR NAVIGATION.